

INFECTED MUSHROOM



POLYVERSE

Table Of Contents

Introduction	3	Envelope Controls	13
Credits		DELAY	
Support		CURVE	
Quick Start	4	DECAY	
Cubase		PITCH ENV	
Logic		FORMANT ENV	
Ableton		Global Controls	14
FL Studio		POLY	
Sonar		GLIDE	
Pro Tools		DELAY	
Loop Controls	9	PITCH W	
PITCH		Preset List	15
FORMANT		Special operations	16
LINK		DETECT MIDI CC	
X-FADE		ASSIGN MIDI CC	
AMP Controls	10	SET ROTARY MOVEMENT	
ATTACK		SET VERTICAL MOVEMENT	
RELEASE		MOD WHEEL VIBRATO	
WET			
LFO Controls	11		
FADE			
RATE			
SHAPE			
RETRIG			
TEMPO			
PITCH LFO			
FORMANT LFO			

Introduction

I Wish is a **granular note freezer**. When you hit a note, the plugin plays a tiny loop at the wavelength of that note. That loop has the pitch of the note you hit, with the frequency content of the audio input. This allows the creation of an array of highly musical effects, ranging from robotic speech, through glitchy effects, to out of this world synth sounds.

The idea for this plugin idea came from Infected Mushroom's work on their famous track, "**I Wish**", in which they manually chopped and edited tiny loops for several days in order to achieve the desired special effect. This plugin creates the same effect, but instantly, instead of several days. Now that **I Wish** has arrived, Infected Mushroom have found numerous more uses for the plugin and have been using it extensively in their work.



For more tutorials and videos on how to use the plug-in please visit our website www.polyversemusic.com.
Have fun freezing your audio!
Infected Mushroom and the Polyverse team.

Credits

Created By: Infected Mushroom

DSP & Code: Polyverse

UX & Visual design: Mr. Frank

Manual Editor: Clif Johnston

Special thanks to all of our beta testers who helped make this a better product!

Support

For any support related issues please use our website:
www.polyversemusic.com/support

Quick Start

To Install, Just **double-click the installer** and follow the instructions! How simple is that?

Cubase:

- Add an audio track
- Add **I Wish** as an insert effect
- Place an audio file in the track



- Add a MIDI track
- Set the MIDI track's output to the **I Wish** plugin.
- Play some midi notes as the audio streams through the plug-in.



- If this does not work, try selecting the "init" preset

Logic:

- Open an instrument track
- Click on the instrument slot to select **I Wish**
- Open a new track and place your audio file inside it.
- Open **I Wish** plugin and in the top right select your sidechain input to be the same as the audio track.
- Mute the original track, select the plugin's instrument track,
- Play some midi notes as the audio streams through the plug-in.
- If this does not work, try selecting the "init" preset



Ableton:

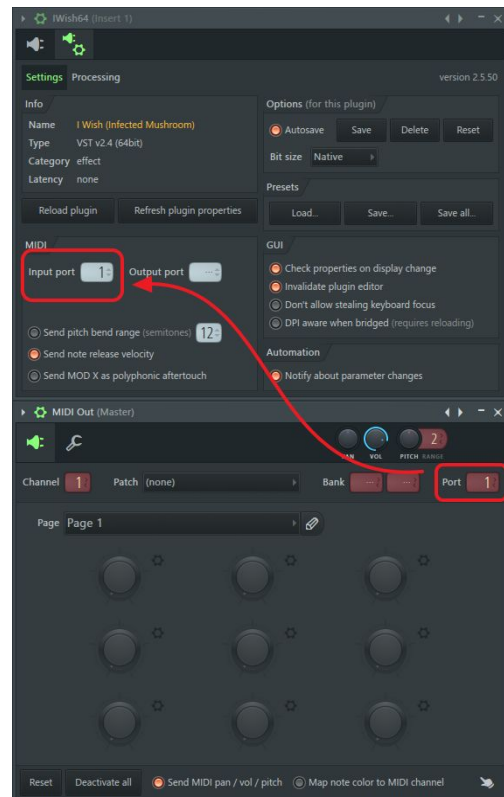
- Click the "I-O" button to show the input and outputs.
- Create an audio track with **I Wish** on it, and drag some audio onto it.
- Create a blank MIDI track
- Set the MIDI output to the track with **I Wish**.
- Play some midi notes as the audio streams through the plug-in.
- If this does not work, try selecting the "init" preset



FL Studio:

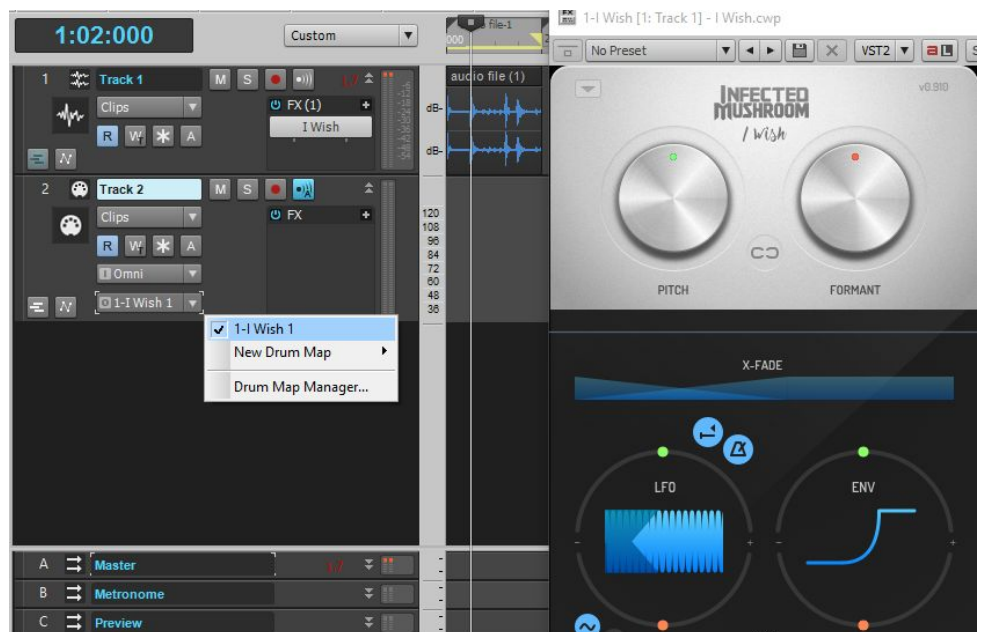
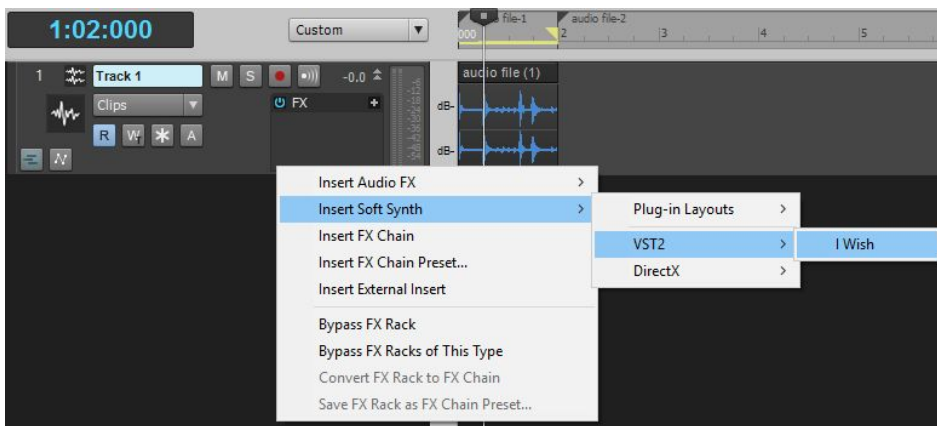
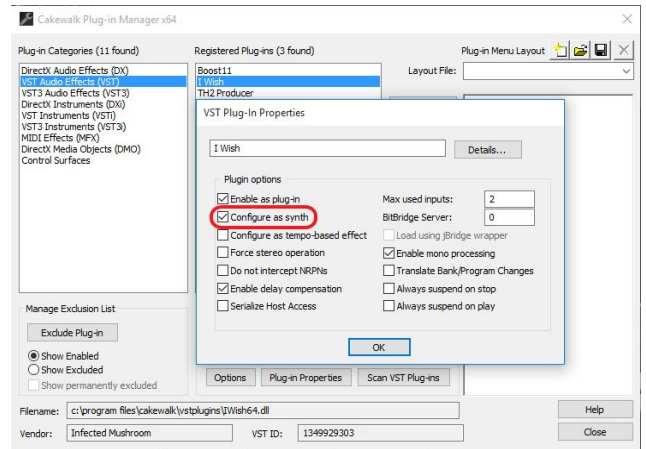


- Drag an audio file to your playlist and rout it to “Track 1” on the mixer.
- Load **I Wish** as an insert on “Track 1” on your mixer.
- Open a “MIDI Out” plug-in and set the Port to 1.
- Set the **I Wish** Midi input port to 1 as well.
- Select the “MIDI Out” channel,
- Play some midi notes as the audio streams through the plug-in.
- If this does not work, try selecting the “init” preset



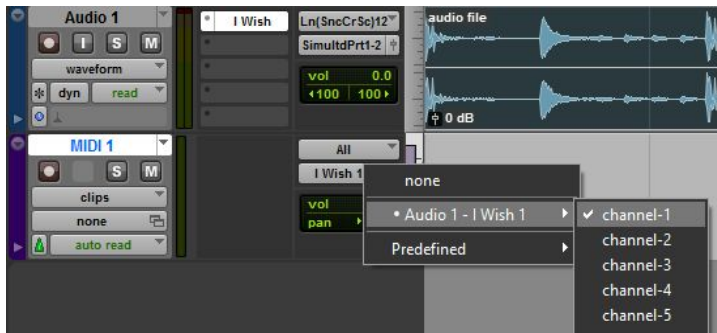
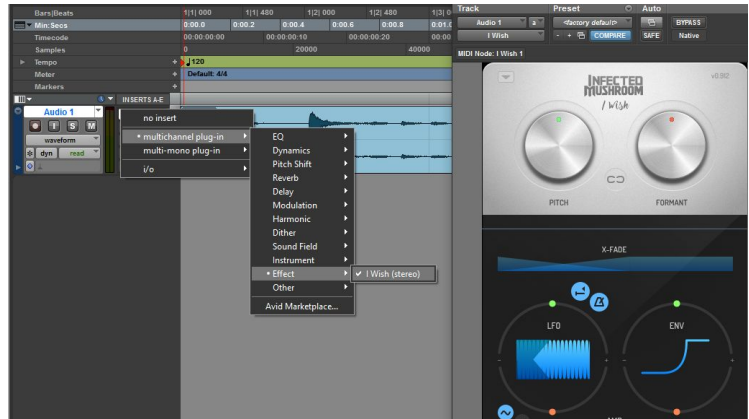
Sonar:

- Configure **I Wish** as a synth in “Cakewalk Plug-in Manager”
- Import an audio file to an audio track ,
- Inset **I Wish** as a “soft synth” on that track.
- Create a new MIDI track,
- Set the MIDI track’s output to I Wish .
- Play some midi notes as the audio streams through the plug-in.
- If this does not work, try selecting the “init” preset.



Pro Tools

- Create a new audio track, and
- Add **I Wish** as an insert effect
- Place an audio file in the track



- Create a new midi track
- Route the midi track's output to the plug-in

- Arm the midi track
- Play some midi notes as the audio streams through the plug-in.
- If this does not work, try selecting the "init" preset.



Loop Controls

PITCH

The PITCH control changes the length of the loop according to the wavelength of the note pressed, thus changing the loop's pitch. It has a range of two octaves up and two octaves down, in semitone steps. To enable fine adjustment, press the shift key while moving the control.

FORMANT

The FORMANT control changes the playback speed of the audio within the loop, shifting the pitch of the overtones (but not the fundamental) up or down. It has a range of two octaves up and two octaves down, in semitone steps. To enable fine adjustment, press the shift key while moving the control.



LINK

The LINK control creates a tape-like effect by linking the PITCH and FORMANT controls, as well as the modulation amount controls for the pitch and formant. Click the LINK icon to activate or deactivate this feature. Turning the pitch control will also turn the formant control, while turning the formant control will set the offset between the two controls.

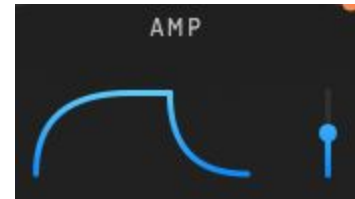
X-FADE

The X-FADE control smoothes the loops by applying a crossfade between the beginning and the end of the loop. This control determines the crossfade duration, and thus the amount of smoothness of the loop.

AMP Controls

The amplifier envelope controls the speed of the crossfade between the dry signal and the wet signal. It also controls the dry/wet balance.

PLEASE NOTE: In this plugin, the dry signal is gated in an inverse relation to the wet signal, i.e. the dry signal is not really dry, but a gated version of the dry signal. This allows a smooth transition between the original sound and the loop created by the plugin.



ATTACK



The ATTACK control sets the speed of the fade-in applied to the wet signal, and subsequently the fade-out of the dry signal. To change the attack time, click on the left envelope segment and drag left for shorter attack times, or right for longer attack times.

RELEASE



The RELEASE control sets the speed of the fade-out applied on the wet signal, and subsequently the fade-in of the dry signal. To change the release time, click on the right envelope segment and drag left for shorter release times, or right for longer release times.

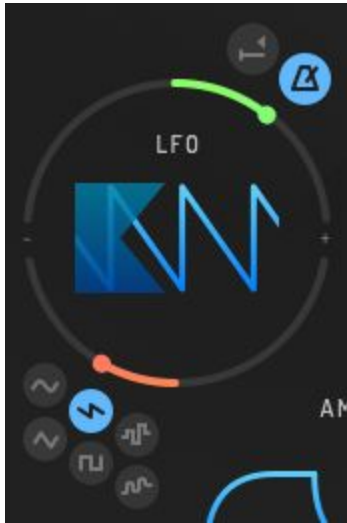
WET



The WET control determines the balance between the dry and wet signals. To change the ratio of wet to dry signals, click on the fader and drag up for more wet signal (and less dry signal), or down for more dry signal (and less wet signal). Double-click to set the control to 50%, which is the most useful value in most cases.

PLEASE NOTE: In this plugin, the dry signal is gated in an inverse relation to the wet signal, i.e. the dry signal is not really dry, but a gated version of the dry signal. This allows a smooth transition between the original sound and the loop created by the plugin.

LFO Controls



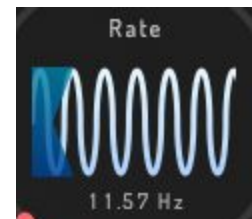
FADE

The FADE control sets the delay time before the fade-in of the LFO signal. Much like many classic analog synthesizers, the delay before the fade-in allows a note to start with no vibrato and increase gradually towards the end of the note. To adjust the delay time, click on the fade area, drag to the left for shorter times, or to the right for longer fade-in times.



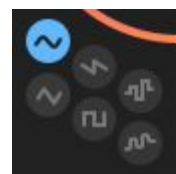
RATE

The RATE control sets the frequency of the LFO. To adjust, click on the waveform and drag to the left for lower frequencies, or to the right for higher frequencies. When the LFO is in tempo mode, this control will set beat divisions as displayed in the value monitor.



SHAPE

The SHAPE controls allows you to select between several shapes for the LFO: sine, triangle, saw down, square, random, and smoothed random. To select a waveform, simply click on the desired shape.



RETRIG

When the RETRIG button is active, the LFO position will reset to the beginning of the waveform every time a MIDI note is received.



TEMPO

When the TEMPO button is active, the LFO frequency will be quantized to the tempo. To change the tempo division value, click on the waveform and drag to the left for slower rates, or to the right for faster rates. If the RETRIG button is off while the TEMPO button is set to on, the LFO will be synchronized to the song position. If RETRIG is active, the LFO will be synced to the start of each incoming MIDI note.



PITCH LFO

The PITCH LFO control sets the amount of LFO modulation (depth) applied to the pitch. This control is bipolar, so dragging towards the plus sign will result in positive modulation, while dragging towards the minus sign will result in negative (inverse) modulation. When the control is centered, no modulation is applied. Double-clicking the control will automatically return it to the center position.



FORMANT LFO

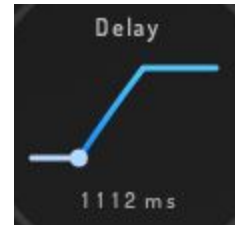
The FORMANT LFO control sets the amount of LFO modulation (depth) applied to the formant. This control is bipolar, so dragging towards the plus sign will result in positive modulation, while dragging towards the minus sign will result in negative (inverse) modulation. When the control is centered, no modulation is applied. Double-clicking the control will automatically return it to the center position.

Envelope Controls

The envelope can be used to modulate the pitch or formant. This envelope has two stages: DELAY and DECAY. It starts from zero and stays there for the duration of the DELAY parameter, and then ascends towards the maximum at the speed of the DECAY parameter.

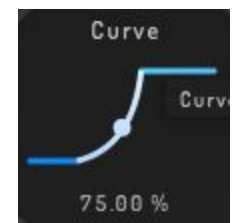
DELAY

The DELAY control sets the time it takes for the envelope to start working, ranging from 0 to 5 seconds. To change the delay time, click on the left envelope segment and drag left for shorter delay times, or right for longer delay times.



CURVE

The CURVE control changes the curve of the envelope. To change the curve, click on the middle segment of the envelope and drag up for a more exponential envelope, or down for a linear one.



DECAY

The DECAY control determines the time it takes the envelope to reach its maximum state, ranging from 0 to 5 seconds. To change the decay, click on the right envelope segment and drag left for shorter decay times, or right for longer decay times.



PITCH ENV

The PITCH ENV control sets the amount of envelope modulation (depth) applied to the pitch. This control is bipolar, so dragging towards the plus sign will result in positive modulation, while dragging towards the minus sign will result in inverse modulation. When the control is centered, no modulation is applied. Double-clicking the control will automatically return it to the center position.



FORMANT ENV

The FORMANT ENV control sets the amount of envelope modulation (depth) applied to the formant. This control is bipolar, so dragging towards the plus sign will result in positive modulation, while dragging towards the minus sign will result in inverse modulation. When the control is centered, no modulation is applied. Double-clicking the control will automatically return it to the center position.

Global Controls



POLY

The POLY control sets the number of voices that can be played at the same time. To set polyphony, click and drag up or down, or click on the + or - buttons to change the number of voices playing.

There are two special monophonic modes: Mono and Legato. In Legato mode, there is no glide between notes unless they are overlapped. In Mono mode, there is always glide between notes, whether they are overlapped or not.

GLIDE

The GLIDE control sets the speed of the pitch glide. Turning the knob to the left will result in shorter glide speeds, and turning it to the right will result in longer glide speeds. Please note that GLIDE is a constant speed, not a constant time.

DELAY

To allow transients to pass through on tempo, the **I Wish** plugin implements a midi delay. The DELAY control sets the midi delay time in milliseconds. Turn the knob to the left for less or no delay, and to the right for up to a 1 second delay.

Note: if you turn the DELAY knob all the way to the right, it will enter “Pitch” mode, which uses the note’s wavelength to determine the delay time. You may find it more natural to play the plugin live this way, since it behaves as if the plugin starts recording when you press a key. When not in Pitch mode, the plugin records continuously, and plays a pre-recording when you hit a key.

PITCH W

The PITCH W controls set the amount of pitch-bending effect the pitch wheel will have on the plugin. It is possible to set different values for both the up direction or down direction. To change values, simply click and drag up and down, or click on the arrows to set the desired value.

Preset List

To manage and switch presets, we recommend that you use your DAW's preset functionality. However, this plugin does offer a very basic method for exporting and importing presets.

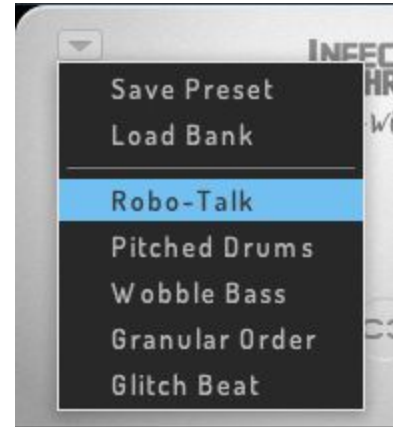
To open the preset list, click on the arrow to show the preset menu. The presets saved can be found in the following positions:

MAC: <user>/Library/PolyVerse/IWish

PC: \Users\<user>\AppData\Roaming\PolyVerse\IWish

Save Preset - stores the preset inside your loaded preset list

Load Bank - loads a bunch of pre-saved presets.



Special operations

Right-click (or control-click on a Mac) any control on the plugin to receive the following menu:



DETECT MIDI CC

To use the “MIDI learn” feature, click the DETECT MIDI CC option for the desired control, and then move the knob or fader on your controller that you wish to associate with that control. The plugin will wait for a MIDI control change signal, and then assign the control number and channel to the corresponding control on the plugin.

ASSIGN MIDI CC

If you need to assign a MIDI CC to a control manually (e.g. your DAW is sending multiple simultaneous MIDI messages), hover over ASSIGN MIDI CC and then choose the desired CC number from the pop-out menu.

SET ROTARY MOVEMENT

The SET ROTARY MOVEMENT option sets the knobs to have a circular control motion. While this option may seem less intuitive, it offers much more precision for fine tuning your plugin controls. Tip: After you click the control, move in large circles around it. Larger circles will result in more resolution.

SET VERTICAL MOVEMENT

The SET VERTICAL MOVEMENT option sets the knobs to have a vertical (up and down) control motion. Although rotary controls are recommended, some users find vertical controls more comfortable.

MOD WHEEL VIBRATO

The MOD WHEEL VIBRATO option assigns the LFO to the modulation wheel for vibrato effects. This option is enabled by default, but may be turned off if you would like to use the modulation wheel for a different purpose.