

Lexicon[®]

PCM NATIVE | EFFECTS BUNDLE
OWNER'S MANUAL



The Lexicon® Legacy
continues...

...with the PCM Native Effects Bundle



For over 40 years Lexicon® has been recognized as the golden standard of digital reverb and effects processing and has continuously introduced leading edge technology for the audio industry. Lexicon has again rocked the audio industry with a complete collection of the finest multi effects plug-ins available. The PCM Native Effects Plug-In Bundle is the ultimate bundle for creating professional, inspirational mixes within popular DAWs like Pro Tools®, Logic®, and any other VST®, Audio Unit™, or RTAS® compatible platform.

With all the flexibility you would expect from native plug-ins, this powerhouse bundle delivers 7 Lexicon effect plug-ins with hundreds of the most versatile and finely crafted studio presets. Designed to bring the highest level of sonic quality and function to all your audio applications, the PCM Native Effects Bundle will take center stage in your DAW.

Congratulations and thank you

for purchasing the PCM Native Effects Plug-in Bundle, an artful blend of seven Lexicon® multi effects plug-ins including: Chorus, Dual Delay, MultiVoice Pitch, Pitch Shift, Random Delay, Resonant Chords and Stringbox. With decades of legacy products to pull from, the PCM Native Effects Bundle includes the finest collection of Factory Presets available. Designed to bring the highest level of sonic quality and function to all of your audio applications, the PCM Native Effects Bundle will take center stage in your DAW.

Quick Start

- Choose one of the seven Lexicon plug-ins. Each plug-in contains a different algorithm:
 - Chorus (Flange)
 - Dual Delay
 - MultiVoice Pitch
 - Pitch Shift
 - Random Delay
 - Resonant Chords
 - Stringbox
- In the plug-in's window, select a category
- Select a preset
- Adjust parameters (optional)
- Save the preset (optional)

It can be as simple or as in-depth as you'd like. The hundreds of included presets work well for most situations, but you can easily adjust any parameter and save any preset. See the "Factory Presets" section for more information on editing, loading and saving presets.

Included Items

- PCM Native Effects Bundle software CD
- iLok license code
- This manual

Table of Contents

Installation	1	Edit Navigation and Full Edit Mode	9
Install the Plug-in Bundle	1	The Soft Row.....	10
iLok License.....	1	Customizing the Soft Row	10
First Look - The User Interface	2	Master Edit Page	11
Algorithm Name.....	3	Resonance Edit Page	12
Preset Category.....	3	LFO Edit Page.....	13
Preset Selector	3	Voice Edit Pages	14
Realtime Display.....	3	Pitch Shift Edit Page	15
Stereo/Phase Analyzers	3	Stringbox Edit Page.....	16
Level Meters.....	3	Factory Presets.....	18
The Fader Area.....	3	Loading a Preset	18
Control Buttons	3	Storing and Managing Presets.....	19
The Realtime Display	4	Portable Presets	20
Off	4	Where are presets stored?	21
3-D Voice View	5	Getting the most out of your computer..	22
Frequency	5	Tempo Mode Presets.....	23
Live Impulse Response	5	The Algorithms	26
The Stereo/Phase Analyzers	6	Chorus (Flange).....	27
Lissajous Figure Window	6	Dual Delay	29
Stereo Width Meter.....	6	MultiVoice Pitch	31
The Fader Area	7	Pitch Shift.....	33
Parameter Name	7	Random Delay	35
Parameter Value	7	Resonant Chords.....	37
Modifier Button	7	Stringbox	39
Fader	7	The Parameters	40
The Control Buttons.....	8	Pitch Shift Parameters	41
Compare	8		
Edit.....	8		
Reload.....	8		
Store.....	8		

Correlation	41	Delay Time Master	46
Crossfade	41	Detune Master (Resonance)	46
Low Shift FC	41	Diffusion	46
Shift Percent	41	Feedback Bandwidth	46
Shift Type.....	41	Feedback Diffusion.....	46
Smart Shift.....	41	Feedback Filter Type.....	46
Stringbox Parameters	42	Feedback Frequency	46
Chorus.....	42	Feedback Level	45
Decay Envelope	42	Feedback Pan.....	47
Delay Mode.....	42	Feedback Shelf.....	47
Keyboard.....	42	Filter Master (Resonance).....	47
Low Bright, Mid Bright, High Bright..	42	LFO Rate	47
Low Decay, Mid Decay, High Decay..	42	LFO Select.....	47
Low Trim, Mid Trim, High Trim	42	LFO Waveform	47
Mix.....	43	Mix.....	47
Note Selection	43	Output Bandwidth.....	47
Output Level	43	Output Filter Type	47
Pan Mode.....	43	Output Frequency	48
Predelay.....	43	Output Pan.....	48
Rolloff	43	Output Shelf.....	48
String Response	43	Resonance	48
Tail Width	44	Resonance Detune	48
Transposition	44	Resonance Frequency	48
Tuning Master.....	44	Resonance Master	48
Tuning System	44	Shift Cent.....	49
All Other Parameters	45	Shift Semitone	49
Blend	45	Transposition	49
Delay Feedback Master.....	45	Tuning Master.....	49
Delay Level.....	45	Tuning Mode.....	49
Delay Level Master.....	45	Wander.....	49
Delay Pitch Master	45		
Delay Time	45		
Absolute.....	45		
Tempo.....	45		

Installation

Install the Plug-in Bundle

Insert the CD into your CD-ROM drive. The Installer should start automatically.

If the Installer doesn't start automatically, you can start it manually by opening the appropriate file on the CD:

Mac®:	PCM Native Effects Plug-in.mpkg
Windows®:	setup.exe

Once the Installer is open, follow the on-screen instructions to install the software you wish to use.

iLok License

You must download the license to your 2nd Generation iLok USB smart key before running any program that might use these plug-ins. If a valid iLok license is not present, the initial plug-in validation scan will fail and you may not be able to run the plug-ins without digging into your system. For more information go to www.iLok.com.

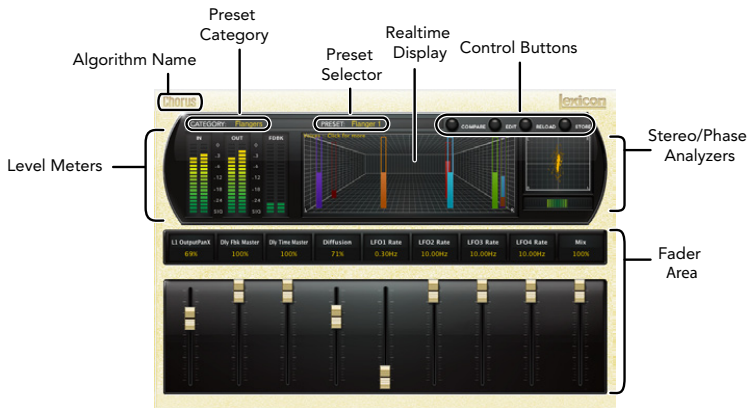


Important! Your PCM Native Effects Bundle will not work without an authorized 2nd Generation iLok USB smart key inserted in your computer's USB port!



First Look - The User Interface

When the plug-in is instantiated, you will see a window that looks something like this:



Algorithm Name

Displays the name of the currently selected algorithm.

Preset Category

Presets for the algorithm are grouped into categories to make them easier to find. Clicking in this area will show the list of categories. Selecting a category will load the presets for that category in the Preset Selector.

Preset Selector

Displays the list of presets within the selected category. Selecting a preset from the list will cause the preset to be loaded into the plug-in.

Realtime Display

Three unique visualizations help you to see inside the effect. See the “Realtime Display” section for more detailed information.

Stereo/Phase Analyzers

These tools provide a visual of the phase response and perceived stereo image of the processed signal. See the “Stereo/Phase Analyzers” section for more detailed information.

Level Meters

Shows the input, output and feedback levels. The Feedback meters measure the energy level being fed back into the beginning of the delay line.

Fader Area

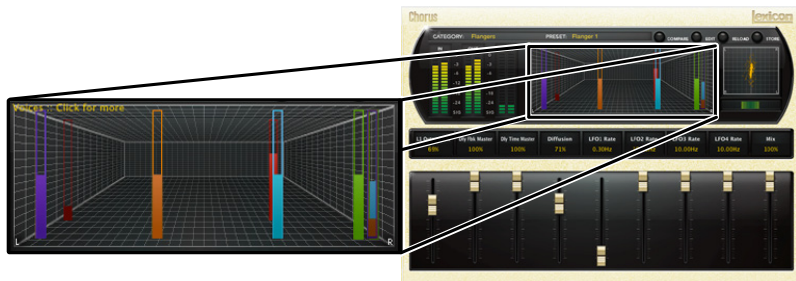
Parameter values are shown and controlled in this area. This is explained in more depth in the “Fader Area” section of this manual.

Control Buttons

These buttons are used to compare, edit, reload and store presets. This is explained in more detail in the “Control Buttons” section of this manual.

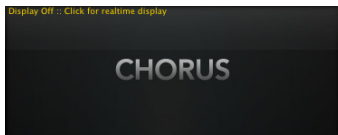
The Realtime Display

The realtime display window allows you to visualize the effect in three ways. While your ears will always be the primary tool in choosing and adjusting presets, the displays provide a direct way to see what's going on. Click anywhere in the realtime display window to change the view.



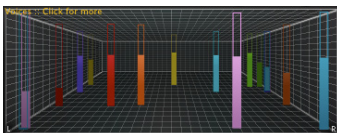
Off

This display mode shows only the algorithm name. It is the default view for the plug-in and requires the least amount of CPU cycles.



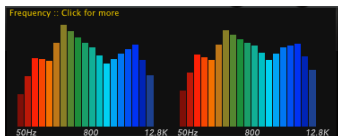
3-D Voice View

This display shows a 3-D view of each individual voice. Each voice (feedback or output) is displayed on screen using a vertical hollow frame. The frame is filled by the measured real-time level in the voice and therefore, acts as a meter (0dB = full scale). The depth represents logarithmic delay time and the x axis represents pan.



Frequency

This display shows the frequency levels of the left and right output signals.



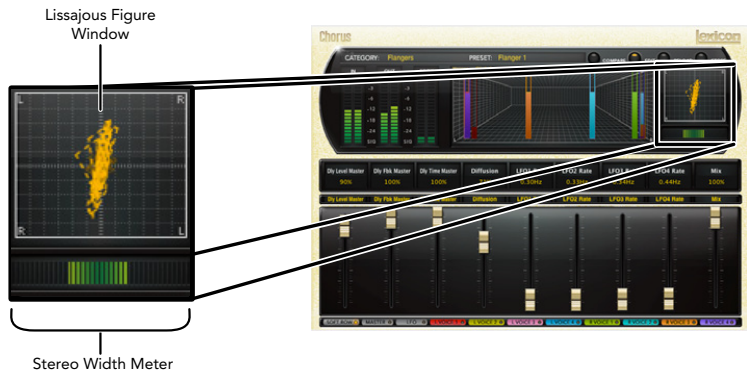
Live Impulse Response

This display shows a live impulse response of the left and right output signals.



The Stereo/Phase Analyzers

These analysis tools provide visualizations of the output signal's stereo image and phase response.



Lissajous Figure Window

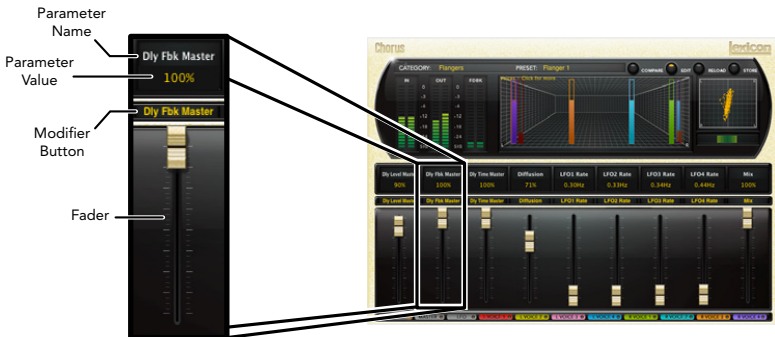
This window shows the width of the stereo image and the signal's phase response, represented using a Lissajous figure as would be seen on an Oscilloscope. The width of the stereo image is displayed by how far out-from-center-the lines spread. The phase response is then displayed by the rightward slant of the overall graph. Therefore, a thin vertical line represents completely mono/in phase content and a thin horizontal line represents completely mono/out of phase content.

Stereo Width Meter

This meter shows the perceived width of the stereo image in a different way. A mono signal would show no level. A true stereo signal will display a wider bar, while inverted mono will display at the maximum width. The widest signals may exhibit problems with mono compatibility, so they should be monitored. The left and right side of this meter will always show identical level. The greater the meter level, the wider the stereo image will be perceived.

The Fader Area

The fader area may be populated by up to nine faders. This illustration shows what may be found for each fader.



Parameter Name

Shows the parameter being adjusted.

Parameter Value

Shows the current value of the parameter. This field may be directly edited.

Modifier Button

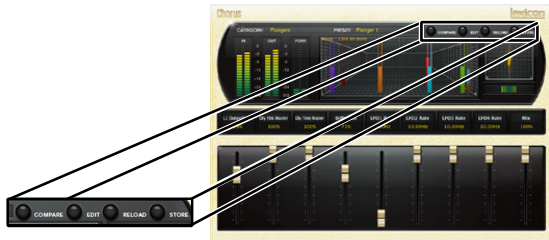
This button only appears for certain types of parameters. It controls aspects of the parameter.

Fader

Changes the value of the parameter. May be dragged, control-dragged (for higher resolution) or may be controlled by the mouse wheel.

The Control Buttons

These buttons let you access all of a preset's parameters, manage presets, and compare changes you've made to the original settings.



Compare

The Compare button temporarily resets all parameters to the original preset value. It is used to get back to the original preset and quickly audition your edits versus the original preset. When compare is on, all parameters are frozen and cannot be changed. Turning Compare off returns you to your edits. Choosing a different preset cancels compare mode.

Edit

Clicking the Edit button enters "Pro" mode, allowing you to go into deep edit mode. Here you can adjust all parameters and configure the soft row. See the "Edit Navigation and Full Edit Mode" section for more detailed information.

Reload

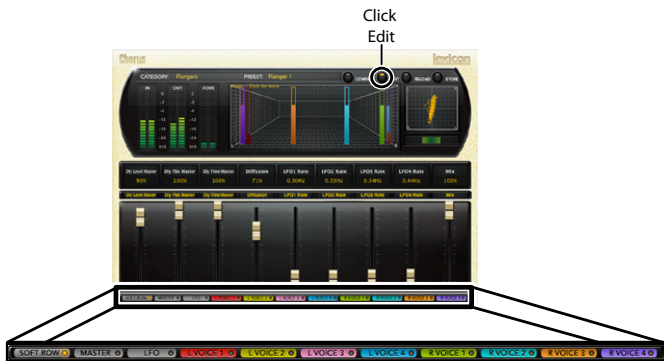
Clicking the Reload button reloads the current preset, overriding all user edits.

Store

The Store button allows you to create and manage user presets. See the "Storing and Managing Presets" section for more information.

Edit Navigation and Full Edit Mode

When the "Edit" button is clicked, an additional row of buttons appear along the lower portion of the plug-in. The names and number of buttons vary among algorithms. Clicking one of the buttons will bring up an edit page holding parameters related to the button name. Those parameters may be edited until the desired sound is achieved.

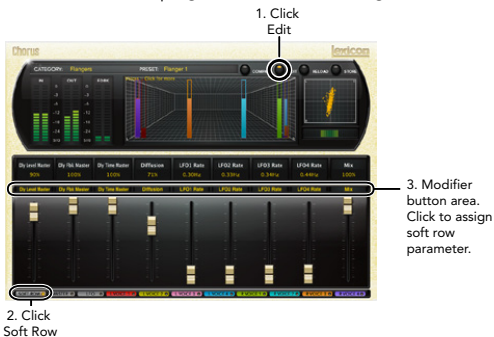


The Soft Row

When the plug-in is first instantiated, a number of parameters appear. This page of parameters is called the “Soft Row”. These parameters were chosen as being the most useful parameters for a particular preset. In most cases, we’ve tried to make a consistent set of choices, but many presets call for different parameters. For most people, the soft row is all that’s needed.

Customizing the Soft Row

The Soft Row assignments are part of the preset. You can change the Soft Row assignments and store the preset as a User preset. To do this, press the “Edit” key to go into edit mode and press the button for “Soft Row”. The plug-in will look something like this:



In the modifier button area, just above the fader, you will see the name of the parameter that is assigned to that position in the soft row. Clicking on any of these parameter buttons reveals a list of all the algorithm’s parameters. Select a parameter (or “no selection”) from the list, and that parameter is then assigned to the soft row. The assigned parameter is still available on its original edit page, but now it appears in the soft row as well.

You can assign any parameter to the soft row. You can even assign the same parameter more than once. When you’re done, store it as a User Preset and you’ll always be able to recall the preset with your customized soft row.

Master Edit Page

The Master edit page is found in the following algorithms: Chorus, Dual Delay, MultiVoice Pitch, Resonant Chords and Random Delay. To enter the Master Edit page, click the Edit button to display the edit page buttons, then click the Master button. A page similar to this will appear:



1. Click
Master

Each parameter is described in the “Parameters” section starting on page 40.

The Master page allows you to adjust the master levels of the algorithm. For example, you can adjust the overall mix level (wet dry mix) and diffusion here.

This page also gives you global control over some of the individual voice parameters. For example, adjusting the delay time master on this page will re-adjust the delay time parameter for all delay voices.

Other controllable parameters on this page are: feedback diffusion, delay level master, delay feedback master, and in the MultiVoice Pitch algorithm, delay pitch master

Note: The Pitch Shift and Stringbox algorithms do not contain a Master page.

Resonance Edit Page

The Resonance Edit page is found only in the Resonant Chords algorithm. To enter the Resonance Edit page click the Edit button to display the edit page buttons, then click the Resonance button. A page similar to this will appear:



1. Click
Resonance

Each parameter is described in the “Parameters” section starting on page 40.

This page provides global control over the resonance parameters. For example, you can adjust the resonance master on this page, which will affect the resonance level of all voices, by the percentage indicated above the resonance master slider.

LFO Edit Page

The LFO Edit page is available in the Chorus and Random Delay algorithms. To enter the LFO Edit page click the Edit button to display the edit page buttons, then click the LFO button. A page similar to this will appear:



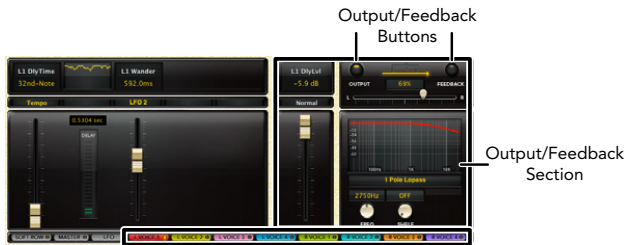
1. Click LFO

Each parameter is described in the “Parameters” section starting on page 40.

This page allows for control of four LFOs. The LFO waveform and rate can be set on this page. There is a graphical display for each LFO providing a real-time visual of the LFO, based on how the LFO waveform and rate parameters have been set.

Voice Edit Pages

The Voice Edit pages are available in the following algorithms: Chorus, Dual Delay, MultiVoice Pitch, Resonant Chords and Random Delay. These algorithms will have multiple Voice Edit pages. To enter one of the Voice Edit pages click the Edit button to display the edit page buttons, then click the Voice button for the voice in which you would like to edit. A page similar to this will appear:



1. Click one of the Voice buttons

Each parameter is described in the “Parameters” section starting on page 40.

Each Voice Edit page within an algorithm contains the same parameters, but controls a different voice.

The Output/Feedback section allows you to edit the output and feedback parameters for each voice. The Output and Feedback buttons allow you to toggle between these two sections. Therefore, these Feedback and Output section parameters are independently controlled. Here you can control the output and feedback level, polarity, pan and filtering for each voice.

Note: The MultiVoice Pitch and Resonant Chords algorithms will have additional parameters on this page. The Pitch Shift and Stringbox algorithms do not have any Voice Edit pages.

Pitch Shift Edit Page

The Pitch Shift Edit page is available only in the Pitch Shift algorithm and is the only page available in this algorithm. Therefore, this page is always present and there is no soft row or Edit button available when using this algorithm.



Each parameter is described in the “Parameters” section starting on page 40.

This page allows you to adjust all of the parameters within the Pitch Shift algorithm. The meters display the current quality and stats of the Pitch Shift algorithm, based on how the parameters have been set.

Stringbox Edit Page

The Stringbox Edit page is the only page available in the Stringbox algorithm. Therefore, this page is always present and there is no soft row or Edit button available when using this algorithm.

The image shows the Stringbox Edit Page interface with several annotations:

- Slider Parameters:** Points to the top section of the interface containing various sliders and knobs for parameters like PREDELAY, TUNING MASTER, TRANSPOSITION, MIX, CHORUS, ROLLOFF, OUTPUT LEVEL, and TAIL WIDTH.
- Combo Box Parameters:** Points to the right side of the interface containing dropdown menus for parameters like TUNING SYSTEM, NOTE SELECTION, DECAY ENVELOPE, PAN MODE, and DELAY MODE.
- Decay/Tone Parameters:** Points to the bottom section of the interface containing three rows of sliders for parameters like LOW DECAY, MID DECAY, HIGH DECAY, LOW TREM, MID TREM, HIGH TREM, LOW BRIGHT, MID BRIGHT, and HIGH BRIGHT.
- Strings Window:** Points to the middle section of the interface containing a waveform display.
- Keyboard:** Points to the bottom section of the interface containing a piano keyboard.

Each parameter is described in the “Parameters” section starting on page 40.

Slider Parameters

These are the fader type parameters.

Combo Box Parameters

These are the combo box type parameters.

Decay/Tone Parameters

Filtering, decay and level can be set here in each of 3 bands. The resulting curve is displayed in the strings window, represented by matching color coded lines.

Strings Window

Stringbox has a unique metering system that shows just which strings are resonating. The strings window is a real time visual representation of the piano strings vibrating based on the energy in each resonator. There is a string image for each note. If that string is resonating, then the string image brightens.

The Decay/Tone parameters can also be adjusted in this graphical display by selecting the group of Decay/Tone parameters, then left clicking and dragging the nodes on the corresponding colored line.

Keyboard

When the Note Selection parameter is set to Keyboard this keyboard section becomes active. This full piano keyboard allows you to select which keys are held down by clicking on each key. When pressed, the key will turn yellow indicating that the key is being held down. Any combination of keys can be held down and there is no limit to the number of keys that can be held.

Note: The keyboard area in the Stringbox algorithm does not respond to midi note commands.

Factory Presets

Each plug-in comes with a large complement of Factory Presets. These presets are grouped in categories (Simple Delays, Tape Delays, etc) that make it easier for you to find the sound you need. Most presets also come with several variants that may save you a lot of editing time.

Loading a Preset

The preset category is chosen from the drop-down menu in the upper-left part of the edit window. When you select a category, the preset menu is updated to show availability of the new presets within the selected category. An initial preset will be loaded from the category. It will be the first preset in the list unless you have previously visited the category. In that case, it will be the last preset you loaded from that category.



Storing and Managing Presets

When you load a Lexicon® plug-in, the overall appearance may be something like this:

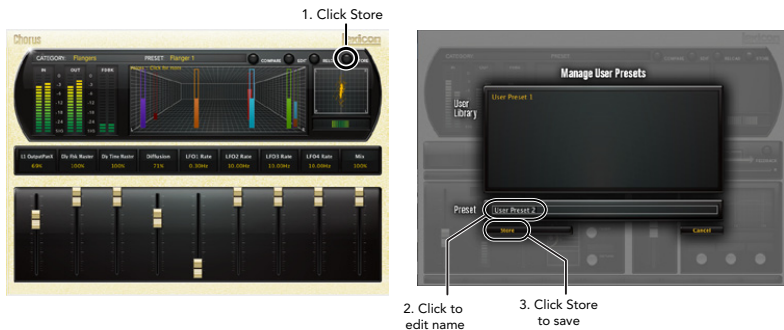


You will notice that the Lexicon plug-in (with the gold border) is embedded within a larger window provided by the DAW. Appearance will differ from host to host (this example is from Logic®). Oftentimes, the DAW itself provides the ability to save presets. The presets saved by the DAW can only be used with the DAW that saved them. If you work with multiple DAWs, this could be a problem.

Portable Presets

Lexicon® has provided a solution by providing portable User Presets. When you store presets with the Lexicon “Store” button (shown below), your presets are available to all DAWs on your machine. With only a little effort, you can also share them with other machines, even when going between Mac and PC.

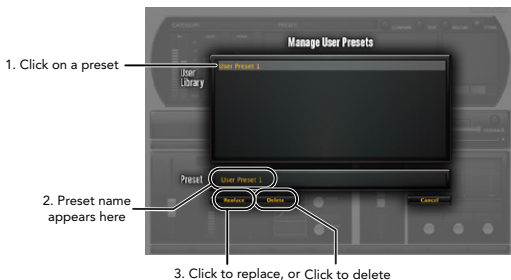
If you’ve made some edits you’d like to save as a plug-in, press the “Store” button on the upper portion of the plug-in editor. You’ll see a screen that looks like this:



The upper field contains the list of User Presets that have already been created for this algorithm. Presets appear in alphabetical order. Click the name field to edit the name of the preset. Once done, click the Store button.

The lower field contains the name of the preset that was loaded before you began editing. You can easily click in this field and change the name to anything you like. Once you have the appropriate name, click the “Store” button and the preset will be saved. If you decide not to save it, then the “Cancel” button will return you to the editor.

If you select one of the existing presets in the library, you can replace or delete that preset.



Where are presets stored?

On the Mac, User Presets are stored in:

/Home/Library/Application Support/LexiconPro/Native/User Presets/AlgorithmName

Home is the name of the account you're logged in under. AlgorithmName is the name of the plug-in.

On Windows Vista/Seven, presets are stored in:

Users/"username"/appdata/"usertype"/Lexicon PCM Native/User Presets/AlgorithmName

On Windows XP it's:

Documents and Settings/"username"/Application Data/Lexicon PCM Native/User Presets/AlgorithmName

Getting the most out of your computer

These plug-ins are written to be efficient, and most computers will run more copies than you may need. But if you find yourself needing to squeeze a little bit more out of your CPU, you can take the following simple steps:

- Turn off the active realtime display. The active display window can represent your effect in real time in several ways. However, this display consumes some of your computer's processing power. If you click until you reach the static display, your computer will have more CPU power available.
- Close the plug-in editor. Unless you're actively controlling your mix in realtime, you don't need the editor after you've made the appropriate settings. All those knobs, faders and displays require processing power. You can always reopen the editor if you need to edit.


Tempo Mode Presets

In some of the plug-ins, you will find presets with “(T)” in the preset name. These are tempo mode presets. The delays in these presets respond (or are synced) to the tempo of the DAW. They are best used when the tempo of the project actually reflects the tempo of the musical material (MIDI sequences and such). In those cases, the tempo component of the preset will reinforce the tempo in some way.



The
lexicon[®]

Heritage

The background of the page is an abstract, fluid, wavy pattern in shades of light blue and white, resembling water or smoke. The waves flow from the left side towards the right, creating a sense of movement and depth. The overall color palette is cool and professional.

Lexicon® occupies a unique position as a leading innovator in both professional and consumer audio industries. Since the release of the first digital delay, Lexicon has stood at the forefront of digital audio with a reputation as a manufacturer of exceptional professional audio and home theater products and an inventor of new technologies. Years of research, development, and learning allow us to continue expanding the boundaries of the listening experience.

Our professional products are prominent in the creation of worldwide music, television and film productions. These products have won numerous awards, including an Emmy® and numerous TEC awards, including a TEC Hall of Fame award for the Lexicon Delta T-101, the world's first digital delay. Lexicon processors have been embraced as the standard in professional signal processing since the introduction of the 480L Digital Effects Processor, which has retained tremendous popularity for the past 22 years. It has since been replaced as the standard in professional signal processing by the 960L Multi-channel Digital Effects System and the PCM96 series Reverb/Effects Processors, which have themselves garnered an impressive following of producers, artists, and engineers.

Growing demand for proprietary Lexicon technologies has led to its appearance in numerous applications – with dramatic results. Our processing is relied upon to enhance the sound of prestigious live halls and venues.

Knowingly or unknowingly – you experience Lexicon products and technologies on a daily basis. Chances are that Lexicon processing was involved in the television program you watch at home, the film you see at the cinema, or the song you listen to on the radio. From the initial tracks to your listening room or automobile, Lexicon is part of the process that brings these recordings to life. Our commitment to the audio professional and content delivery ensures an unbroken chain between the artist and the audience. Now hear this...

The Algorithms

You've just received a package with seven plug-ins, each one controlling a different algorithm. The following section will provide details about each of these algorithms.



Chorus (Flange)

The Chorus effect is used to thicken a track or create a lush, shimmering effect and is often used on vocals and guitars. Flanging creates a “sweeping” type sound that is similar to that of a phaser effect and is often used on guitars and bass, but can be used on other instruments as well.

This algorithm is quite similar to the other delay algorithms in the PCM Effects Bundle. The difference is in the modulation aspect. The same LFO modulators are available as in the Random Delay algorithm, but the voices react differently. In the Random Delay algorithm, the voices move abruptly. However, in the Chorus (Flange) algorithm, they move very gradually, with noticeable, and desirable, pitch effects as they move. For the chorus effect, the voices move somewhat independently, yielding a thickening effect without too much filtering. For the flange effect, voices are generally paired at close intervals. As they move, a noticeable comb-filtering takes place due to cancellation. The voices are often fed back, nearly to the point of instability.

The Chorus (Flange) algorithm has 8 total delay voices (4 delay voices per input channel). Each voice has independently adjustable delay time of up to 9.5 seconds (plus an additional 1 second of “Wander” delay), selectable LFO and independent output and feedback control.

Each of the delay voice’s output and feedback paths include an independently selectable filter, adjustable filter frequency, filter bandwidth, filter shelf, polarity, level and pan control.



Dual Delay

The Dual Delay algorithm is a great choice for creating brilliant delay effects, such as Slap-Back, Echo, Tape Echo, or Double Tracking.

This algorithm is very similar to the Chorus (Flange) algorithm except that it has fewer delay voices and no LFO control.

The Dual Delay algorithm has 4 total delay voices (2 delay voices per input channel). Each voice has independently adjustable delay time of up to 9.5 seconds and independent output and feedback control.

Each of the delay voice's output and feedback paths include an independently selectable filter, adjustable filter frequency, filter bandwidth, filter shelf, polarity, level and pan control.



MultiVoice Pitch

The MultiVoice Pitch algorithm is a pitch shifter with a twist! This algorithm works great for thickening up vocals, creating lush shifting effects, or creating far-out special effects, such as effects containing multiple delay lines that can shift up and/or down while locked to session tempo.

This algorithm is a multi-voice delay, which contains an independently controlled pitch shifter on each voice and provides feedback control capabilities, which are used for creating arpeggios. Pitch can be adjusted in semitones (-12 to 12) and/or cents (-50 to 50).

The MultiVoice Pitch algorithm has 6 total delay voices (3 delay voices per input channel). Each voice has independently adjustable delay time of up to 4.75 seconds, pitch control and independent output and feedback control.

Each of the delay voice's output and feedback paths include an independently selectable filter, adjustable filter frequency, filter bandwidth, filter shelf, polarity, level and pan control.



Pitch Shift

Pitch Shifting is commonly used in sound design for film and for correcting pitch when converting between different frame rates. In music, it is generally used for shifting the pitch of vocals (for effect) or an instrument (usually when single notes are played, such as in a guitar solo). It can also be used for very dramatic shifting effects; if you are after that “Demonic” sounding voice or “Chipmunk” effect, then this is the algorithm to use.

In the Pitch Shift algorithm, pitch can be adjusted using one of two types: Musical or Percent. In Musical mode, pitch can be adjusted in semitones (-12 to 12) and/or cents (-50 to 50). In Percent mode, pitch can be adjusted between -60% and 60%. This algorithm also provides control over crossfade, low shift cutoff frequency, smart shift and correlation.



Random Delay

The delays available in the Random Delay algorithm are especially useful for:

- **Multitap Tape Loops**
Feedback can be used to recirculate delays. Appropriate use of highpass and lowpass filters emulates the bandpass effects of multi-generational tape loops (hiss not included). Feedback diffusion allows emulation of azimuth misalignment – a hallmark of the sound.
- **Early Reflection Modeling**
Although different in scope from Lexicon® Ambience algorithms, Random Delays can be used to place early reflections in stereo or surround fields.
- **Modulated Delays**
Delay times may be modulated by signal level, LFO or random values.

Random Delays have the same diffusion controls as Dual Delays, but build upon the Dual Delay algorithm by adding additional LFO control and a second delay parameter (or “Wander”). The Wander parameter provides up to one second of additional delay time for each voice. Voices can be assigned to either randomize, or not randomize.

The Random Delay algorithm has 4 total delay voices (2 delay voices per input channel). Each voice has independently adjustable delay time of up to 9.5 seconds (plus an additional 1 second of “Wander” delay), selectable LFO and independent output and feedback control.

Each of the delay voice’s output and feedback paths include an independently selectable filter, adjustable filter frequency, filter bandwidth, filter shelf, polarity, level and pan control.



Resonant Chords

The Resonant Chords algorithm, first introduced in the Lexicon PCM70, allows multiple delay voices to be tuned to resonate on specific notes. Use this algorithm to create glistening chords, strange ringing delays, or truly bizarre room sounds.

The Resonant Chord algorithm uses impulsive energy at the inputs to excite six resonant voices (notes). The voices resonate to some degree with any input, but the most effective excitation contains all frequencies, like percussion. Other instruments may give a quality of tonal ambience in which certain notes rise ethereally from the background.

The Resonant Chords algorithm has 8 total delay voices (4 delay voices per input channel). Each voice has independently adjustable delay time of up to 9.5 seconds, resonance frequency, resonance amount, resonance filter, resonance detune and independent output and feedback control.

Each of the delay voice's output and feedback paths include an independently selectable filter, adjustable filter frequency, filter bandwidth, filter shelf, polarity, level and pan control.



Stringbox

If you've ever made a sound near a piano, then you know what Stringbox is. The strings of the piano vibrate by sympathetic resonance. If there is sound energy at the frequency of a string (or a multiple of that frequency), that string will vibrate. By holding down different combinations of keys, a ghostly harmony can be created.

The Stringbox algorithm is a resonator that reacts to whatever energy it sees. It has 88 courses of virtual strings, with each course consisting of three strings. The strings can be tuned in several ways and those strings may be detuned relative to one another. The characteristics of the strings—the material from which they are made—can also be easily adjusted.

The Parameters

The seven plug-ins contain hundreds of presets, covering just about every possible need, but you can refine and customize any preset by adjusting its parameters. Parameters are the building blocks within each preset that determine how it sounds and behaves.

Each algorithm contains a set of parameters, and a variety of those parameters are combined to create a preset.

Following are all the algorithm parameters you can edit in the PCM Native Effects Plug-ins. Note that sometimes parameter names are abbreviated when they appear onscreen, and they may have prefixes indicating which voice or channel they control (for example, the Feedback Level parameter for voice 1 may appear as “L1 FbkLvl”).

Pitch Shift Parameters

Correlation

This parameter tells the algorithm if the program material needs to be processed as dual mono or stereo. If the program material is stereo material, this should be on in order to maintain a stable image. If the program material is dual mono (two independent tracks), then this parameter should be set to off.

Crossfade

As the Pitch Shift algorithm needs to create splices of the program material in order to process it, this parameter is used to smooth out the signal between these splices. A longer crossfade will result in a smoother splice, but sometimes at the expense of ghosting (double hits when shifting up and missing hits when shifting down). Start with shorter crossfades and then raise the value until an acceptable compromise is reached.

Low Shift FC

This parameter affects the lowest frequency at which the shifter looks for good splices. The shifter will shift all frequencies, but the quality of shift is sensitive to the mix of frequencies. If there are strong low frequencies in the mix, this value should be low. If the bulk of energy is at higher frequencies, then it should be raised.

Shift Percent

Displayed when "Percent" is selected as the Shift Type. This parameter adjusts the pitch as a percentage.

Shift Type

This parameter is found only in the Pitch Shift algorithm. This parameter allows you to select whether you want to adjust the pitch using Semitone and Cent controls (Musical) or by a percentage (Percent).

Smart Shift

This parameter affects the quality of pitch shifting. When turned on, the algorithm looks for optimal splices in the musical material. In almost all cases, this should be on. If attempting to recreate the sound of certain inexpensive shifters from the 1980s, then this parameter should be turned off.

Stringbox Parameters

Chorus

Controls the amount of detuning in each course of strings.

Decay Envelope

Controls how the note rings after a key is deselected. Open means that the note will ring until it dies away. The Damped settings causes it to die more quickly.

Delay Mode

Determines whether the predelay uses an absolute value (milliseconds) or a note value related to the tempo of the mix.

Keyboard

This region shows which keys of the virtual piano have been pressed, indicating which pitches will be resonated. If the Note Selection parameter has been set to Keyboard, then notes may be selected by clicking on keys.

Low Bright, Mid Bright, High Bright

This parameter controls the target brightness of strings in each of four zones. This is the brightness of the string as it reaches the end of its decay. Lower brightness means that the string becomes duller as it decays. This may be adjusted by selecting the blue tab and then shaping the blue line above the keyboard.

Low Decay, Mid Decay, High Decay

This parameter controls the decay time in each of four zones. This may be adjusted by selecting the red tab and then shaping the red line above the keyboard.

Low Trim, Mid Trim, High Trim

This parameter controls the level of strings in each of four zones. This may be adjusted by selecting the green tab and then shaping the green line above the keyboard.

Mix

Mix is the proportion of wet (processed) signal to dry (unprocessed) signal.

Note Selection

Controls which strings are allowed to resonate. There are several preset selections, such as Damper Down, White Keys, and Black Keys. The Keyboard setting allows you to select any pattern of notes by simply clicking on the keyboard. There are even several random modes which will play the keyboard for you.

Output Level

Controls the level of the signal out of the plug-in.

Pan Mode

Determines how the strings are panned across the stereo field. Piano places strings low-to-high from left to right. Reverse Piano flips that orientation. Low Spread alternates notes, with the lowest notes at the farthest left and right position. High Spread places lower notes in the center (just the way organ pipes are distributed). Random continually moves the positions of the strings.

Predelay

This parameter is found only in the Stringbox algorithm. Your piano doesn't have this, but this parameter allows the resonated signal to be delayed. Operates in either absolute or tempo mode.

Rolloff

This parameter is found only in the Stringbox algorithm. This is a lowpass filter that is applied to the complete resonated signal.

String Response

This parameter is found only in the Stringbox algorithm and controls the virtual material (soft, hard, just right) that the string is made from.

Tail Width

This parameter is found only in the Stringbox algorithm. A matrix is used to mix the output signal. This controls the impression of signal width. Very spacious signals should be monitored with both a surround decoder and in mono, in order to maintain compatibility. All settings in factory presets are safe for any application.

Transposition

In the Stringbox algorithm, this parameter transposes the resonance relative to the keyboard. For example, if a C is depressed on the keyboard and the transposition is 2 semitones, that string will resonate a D.

Tuning Master

In the musical world, the tuning reference is A=440. This means that the note A (above middle C) is equivalent to 440 Hz. However, that's not the way it always works in the real world. In the Stringbox algorithm, this parameter allows you to change the base tuning to something other than A=440.

Tuning System

Controls the way the strings are tuned. Many choices are available. Equal-tempered is best for most applications, but several forms of just-intonation are available for Baroque musicians. Quarter-tone is available as are several non-tonal tuning plans.

All Other Parameters

Blend

This parameter is found in the Resonant Chords algorithm and adjusts how much of the direct signal is allowed to pass along with the effect from the resonator (Off meaning you hear only the resonance effect and none of the direct signal and 0.0 dB meaning you hear an equal amount of direct signal and the resonance effect). This is a global control which affects all voices.

Delay Feedback Master

Controls all delays in the algorithm. Each voice has its nominal feedback gain adjusted by this percentage.

Delay Level

This parameter adjusts the output level of the delay line within each voice.

Delay Level Master

Controls all delays in the algorithm. Each voice has its nominal gain value adjusted by this percentage.

Delay Pitch Master

This parameter is found in the MultiVoice Pitch algorithm and controls all pitch levels in the algorithm. Each voice has its pitch level value adjusted by this percentage.

Delay Time

Delay time defines the time offset of a delay voice. This parameter can be adjusted in one of two ways, they are:

- **Absolute** - Adjusts the delay time in seconds/milliseconds.
- **Tempo** - Adjusts the delay time in fractions of tempo (quarter note, eighth note, etc.). This tempo is synced to the DAW's session tempo.

This parameter is used in many of the algorithms, not just the delays. In all cases, it does the same thing.

Delay Time Master

Controls all delays in the algorithm. Each voice has its nominal delay time adjusted by this percentage.

Detune Master (Resonance)

This parameter is found in the Resonant Chords algorithm and controls detuning of all voices in the algorithm. Each voice has its nominal detune, adjusted by this percentage.

Diffusion

Input diffusion is the first part of processing for any signal entering a delay. It can be described as a smearing or softening of the signal and is typically used to lessen the impact of strong transients.

Feedback Bandwidth

When Bandpass or Notch have been selected, this parameter allows you set the bandwidth of a feedback filter. Bandwidth is specified in octaves or fractions thereof.

Feedback Diffusion

Feedback Diffusion is similar to Input Diffusion, except that it is applied to a delayed signal that is being added back into the input.

Feedback Filter Type

This parameter allows you to assign a filter on the feedback portion of the signal within a delay voice. There are 6 selections available: 1 Pole Lopass, 1 Pole Hipass, 2 Pole Lopass, 2 Pole Hipass, Bandpass, and Notch.

Feedback Frequency

This parameter lets you set the cutoff frequency of the feedback filter. The audible effect of this is determined by the Feedback Filter Type parameter.

Feedback Level

This parameter determines the feedback level for a particular voice. It is controlled independently of the voice's output level.

Feedback Pan

This parameter controls the left-right soundstage of the feedback portion of the delay line signal.

Feedback Shelf

This parameter effects all feedback filter types. It allows a certain amount of unfiltered audio to be combined with the filtered audio. This effectively lowers the effect of the filter. Another way of looking at it is that it lessens the normal filter slope of 12 dB per octave. Unlike the traditional biquad filter, the shelf is effective for all filter forms.

Filter Master (Resonance)

This parameter is found in the Resonant Chords algorithm and controls all voices in the algorithm. Each voice's resonator has its nominal cutoff frequency adjusted by this percentage.

LFO Rate

Sets the speed of an LFO in Hz.

LFO Select

This parameter determines which of the available LFOs may be used to control a voice. The voice may use the LFO output or the inverted LFO output.

LFO Waveform

Sets the shape of the wave the LFO will follow.

Mix

Mix is the proportion of wet (processed) signal to dry (unprocessed) signal.

Output Bandwidth

When Bandpass or Notch have been selected, this parameter allows you set the bandwidth of an output filter. Bandwidth is specified in octaves or fractions thereof.

Output Filter Type

This parameter allows you to assign a filter on the output of a delay voice. There are 6 selections available, they are: 1 Pole Lopass, 1 Pole Hipass, 2 Pole Lopass, 2 Pole Hipass, Bandpass, and Notch.

Output Frequency

This parameter lets you set the cutoff frequency of the output filter. The audible effect of this is determined by the Output Filter Type parameter.

Output Pan

Routes the post-filter delay voice across the left-right soundstage.

Output Shelf

This parameter effects all output filter types. It allows a certain amount of unfiltered audio to be combined with the filtered audio. This effectively lowers the effect of the filter. Another way of looking at it is that it lessens the normal filter slope of 12 dB per octave. Unlike the traditional biquad filter, the shelf is effective for all filter forms.

Resonance

This parameter is found in the Resonant Chords algorithm and determines how much of the resonance effect will be added to the delay voice.

Resonance Detune

This parameter is found in the Resonant Chords algorithm and acts as an adjustment to the specified frequency for the voice's resonator. The calculation of cents yields a ratio which is used to modify the specified frequency of the voice. This parameter is then modified by the Detune Master parameter.

Resonance Frequency

This parameter is found in the Resonant Chords algorithm and determines at which frequency the delay voice resonates. It can be adjusted by frequency (Hz) or musical notes (Equal Tempered).

Resonance Master

Controls all voices in the algorithm. Each voice has its nominal resonance adjusted by this percentage.

Shift Cent

This parameter is found in the MultiVoice Pitch algorithm and controls the amount of pitch shifting per voice and is adjustable between -50 Cents and +50 Cents. This parameter can be used in conjunction with the Shift Semitone parameter.

Shift Semitone

This parameter is found in the MultiVoice Pitch algorithm and controls the amount of pitch shifting per voice and is adjustable between -12 Semitones and +12 Semitones. This parameter can be used in conjunction with the Shift Cent parameter.

Transposition

Found in the Resonant Chords algorithm, this parameter transposes the resonant frequency within all delay voices.

Tuning Master

In the musical world, the tuning reference is A=440. This means that the note A (above middle C) is equivalent to 440 Hz. However, that's not the way it always works in the real world. Therefore, in the Resonant Chords algorithm, this parameter affects the resonant frequency of all voices in the algorithm. Changing the master tuning causes the notes in all voices to be sharp or flat.

Tuning Mode

This parameter is found in the Resonant Chords algorithm and determines whether the resonant tones are set in Hz or Equal Tempered.

Wander

This parameter determines the amount of additional delay that the LFO process can add to a voice's offset.

lexicon[®]
by **HARMAN**

www.lexiconpro.com

Harman
8760 South Sandy Parkway, Sandy, Utah 84070, U.S.A.
Phone: 801.568.7660 | Fax: 801.568.7662
Questions or comments? Visit us at www.lexiconpro.com

©2011 Harman. All rights reserved.
Lexicon is a registered trademark of Harman.
All other trademarks are property of their respective owners.
All features and specifications are subject to change.